



# SUBMITTAL DRAWING



TMS Johnson, Inc. | 763-544-5442 | [www.tmsj.com](http://www.tmsj.com)  
Twin Cities: 2908 Nevada Ave N, New Hope, MN 55427  
Rochester: 3270 19th St NW, Suite 210, Rochester, MN 55901

## AMC-1A Series Single/Dual Channel Gas Monitor

The AMC-1A Series Gas Monitor provides a highly configurable monitoring package for a multitude of applications. Incorporating micro-controller based design, it provides accuracy, durability, and ease of use within a compact package. The versatile AMC-1A Series Monitor can be configured to work with all AMC sensors and sensor/transmitters

The monitor delivers low cost and versatility, turning even the simplest job into big savings. It incorporates a robust enclosure designed to provide optimal gas flow ensuring optimum response.

### SPECIFICATIONS

**Enclosure:** ASA 61 gray enameled 16 gauge steel  
Nema 4X Fiberglass (Optional)

**Supply Voltage:** 120 VAC, 60 Hz

**Dimensions:** 20.32cm H x 20.32cm W x 12.70cm D  
(8" x 8" x 5")

**Weight:** 4.54 kg (10 lb)

**Operating Temperature:** -20°C to 40°C (-4°F to 104°F)

**Storage Temperature:** -40°C to 65°C (-40°F to 149°F)

**Monitor Warranty:** Two years

**Relay Contacts:** Up to 5 DPDT 10A @ 250 VAC Res.

**Alarm Thresholds:** 2 Per Channel, Available Fail

**Indicators (per Gas):**

Red LED – **Alarm**

Yellow LED – **Warning**

Green LED

- LED On – **Run**
- LED Flashing – **Fault**
- LED Off – **Off**

**Recommended Mounting Height:** 4-5 ft. A.F.F.

**Concentration Display(s)** – Optional



### Features

Alarms disabled during warm up

System test switch

User selectable:

- Activation delays, five minutes for Warning and/or Alarm set points
- Minimum Run Timer
- 95 dBa Audio alarm with Warning and/or Alarm set points

Hinged door

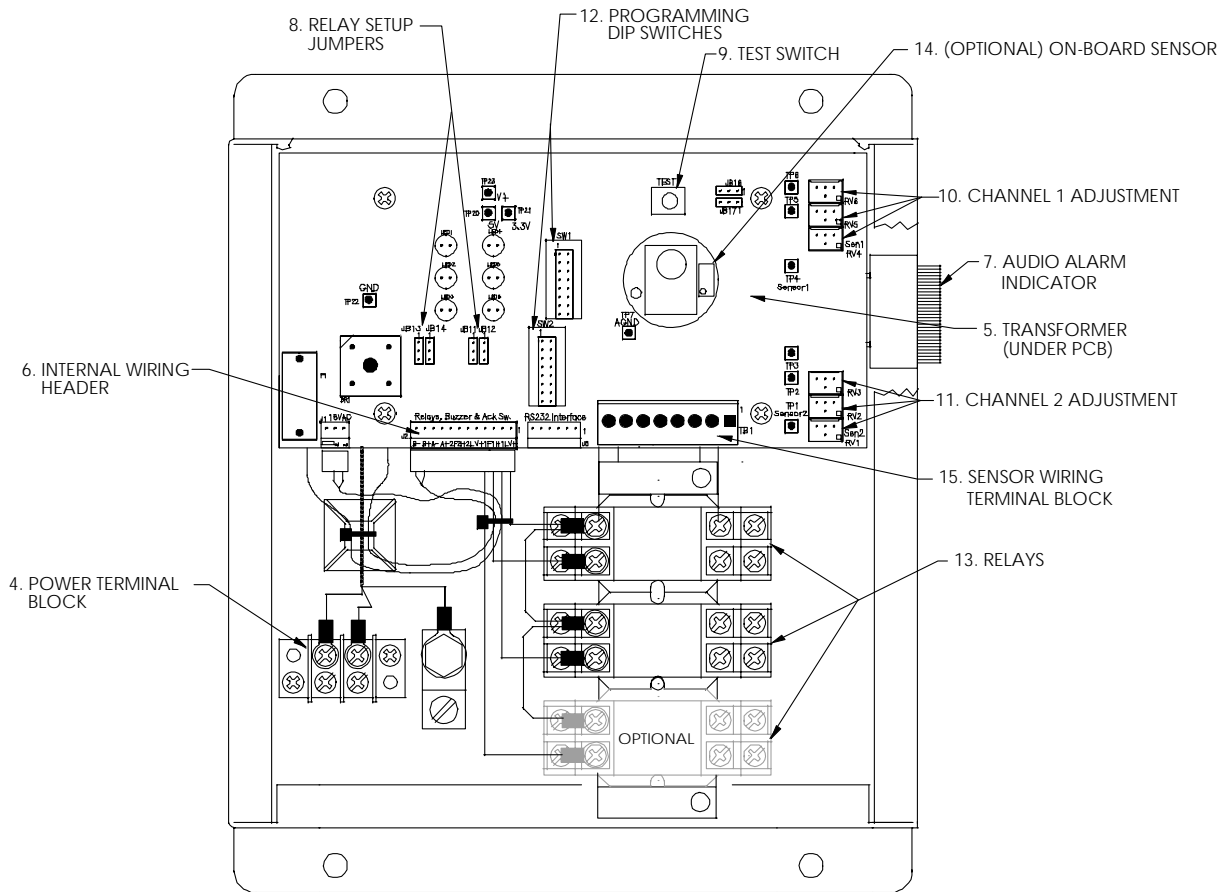
Optional latching relays with manual reset

Optional enclosure key lock

**BUILT WITH 100% GREEN ELECTRICITY**



### AMC-1A Series Internal View



### AMC-1A Series Build Code

