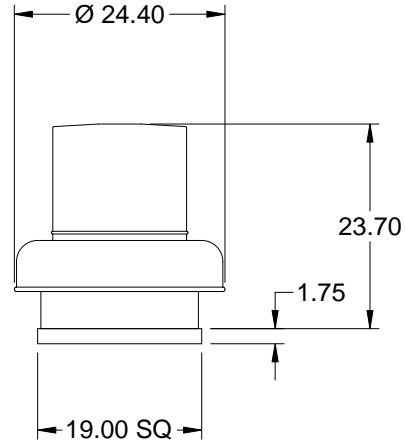


Model: G-103-VG

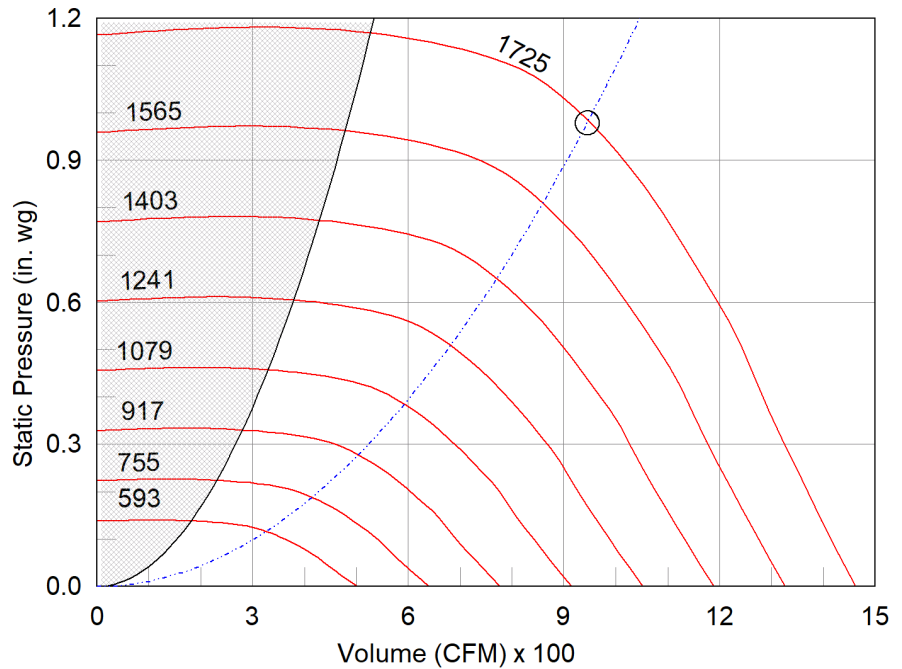
Direct Drive Centrifugal Roof Exhaust Fan



| Dimensional | |
|-----------------------|-------------|
| Quantity | 1 |
| Weight w/o Acc's (lb) | 35 |
| Weight w/ Acc's (lb) | 40 |
| Roof Opening (in.) | 14.5 x 14.5 |

| Model | HP | RPM | Sones @ 0 in. | Max BHP | Pressure in Inches WG | | | | | | | |
|----------|-----|------|---------------|---------|-----------------------|-------|-------|-------|-------|-------|-------|-------|
| | | | | | 0 | 0.125 | 0.250 | 0.375 | 0.500 | 0.625 | 0.750 | 1.000 |
| G-103-VG | 1/4 | 1725 | 12.2 | 0.29 | 1462 | 1405 | 1351 | 1298 | 1250 | 1193 | 1126 | 955 |

| Motor | |
|---------------------|----------|
| Motor Mounted | Yes |
| Size (hp) | 1/4 |
| Voltage/Cycle/Phase | 115/60/1 |
| Enclosure | ODP |
| Motor RPM | 1725 |
| Efficiency Rating | High |
| Windings | 1 |
| FLA (Amps) | 2.85 |



- △ Operating Bhp point
- Operating point at Total External SP
- Fan curve
- - - System curve
- Brake horsepower curve

Notes:

All dimensions shown are in units of in.
 *NEC FLA - based on tables 430.248 or 430.250 of National Electrical Code 2014. Actual motor FLA may vary, for sizing thermal overload, consult factory.
 LwA - A weighted sound power level, based on ANSI S1.4
 dBA - A weighted sound pressure level, based on 11.5 dB attenuation per Octave band at 5 ft - dBA levels are not licensed by AMCA International
 Sones - calculated using ANSI/AMCA 301 at 5 ft

