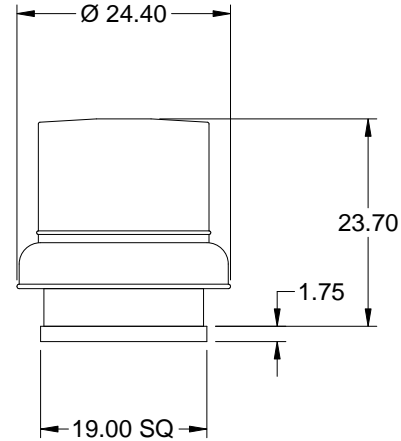


Model: GB-081-4

Belt Drive Centrifugal Roof Exhaust Fan

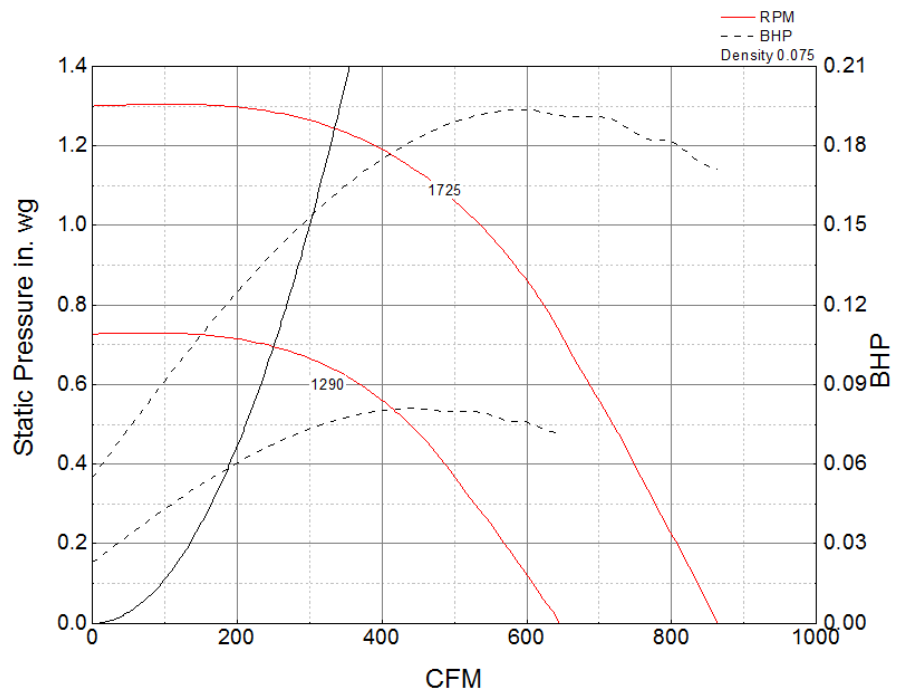
Standard Construction Features:

- Aluminum housing - Backward inclined aluminum wheel - Curb cap with prepunched mounting holes - Motor and drives isolated on shock mounts - Birdscreen - Ball bearing motors - Adjustable motor pulley - Adjustable motor plate - Fan shaft mounted in ball bearing pillow blocks - Bearings meet or exceed temperature rating of fan - Static resistant belts - Corrosion resistant fasteners - Sizes 141 and larger have internal Lifting lugs



Dimensional	
Quantity	1
Weight w/o Acc's (lb)	52
Weight w/ Acc's (lb)	57
Max T Motor Frame Size	56
Roof Opening (in.)	14.5 x 14.5
Damper Size	12 x 12
Roof Curb	GPI - 19

Motor	
Motor Mounted	Yes
Size (hp)	1/4
Voltage/Cycle/Phase	115/60/1
Enclosure	ODP
Motor RPM	1725
Efficiency Rating	Standard
Windings	1
NEC FLA* (Amps)	5.8



Motor HP	Max BHP	Max Fan RPM	Min Fan RPM	Ps (in. wg)	0	0.125	0.25	0.375	0.5	0.625	0.75	0.875	1
1/4	0.19	1725	1290	CFM	864	829	793	756	719	679	640	592	527
				Sones	12.7	12.5	12.3	12.1	11.7	11.4	11.1	10.8	10.6