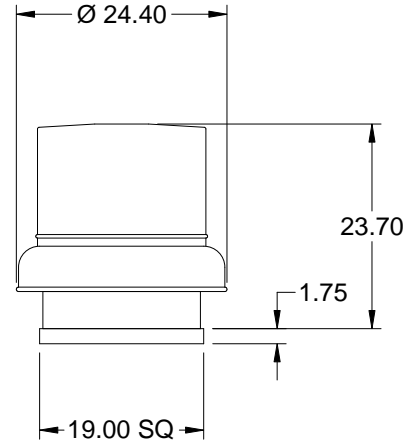


# Model: GB-101-4

## Belt Drive Centrifugal Roof Exhaust Fan

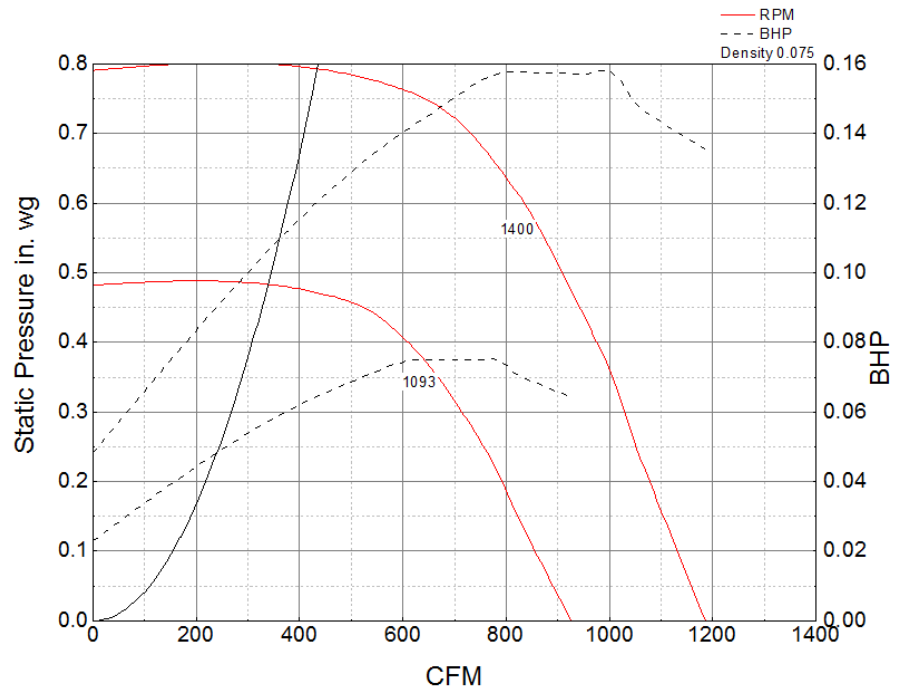
### Standard Construction Features:

- Aluminum housing - Backward inclined aluminum wheel - Curb cap with prepunched mounting holes - Motor and drives isolated on shock mounts - Birdscreen - Ball bearing motors - Adjustable motor pulley - Adjustable motor plate - Fan shaft mounted in ball bearing pillow blocks - Bearings meet or exceed temperature rating of fan - Static resistant belts - Corrosion resistant fasteners - Sizes 141 and larger have internal Lifting lugs



Dimensional	
Quantity	1
Weight w/o Acc's (lb)	48
Weight w/ Acc's (lb)	53
Max T Motor Frame Size	56
Roof Opening (in.)	14.5 x 14.5
Damper Size	12 x 12
Roof Curb	GPI - 19

Motor	
Motor Mounted	Yes
Size (hp)	1/4
Voltage/Cycle/Phase	115/60/1
Enclosure	ODP
Motor RPM	1725
Efficiency Rating	Standard
Windings	1
NEC FLA* (Amps)	5.8



Motor HP	Max BHP	Max Fan RPM	Min Fan RPM	Ps (in. wg)	0	0.125	0.25	0.375	0.5	0.625	0.75
1/4	0.16	1400	1093	CFM	1,186	1,118	1,052	990	909	810	634
				Sones	9.1	8.6	8.4	8.2	7.8	7.3	6.5