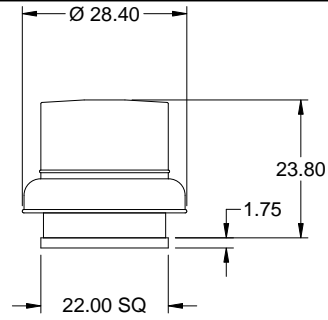


Model: GB-161-5

Belt Drive Centrifugal Roof Exhaust Fan

Standard Construction Features:

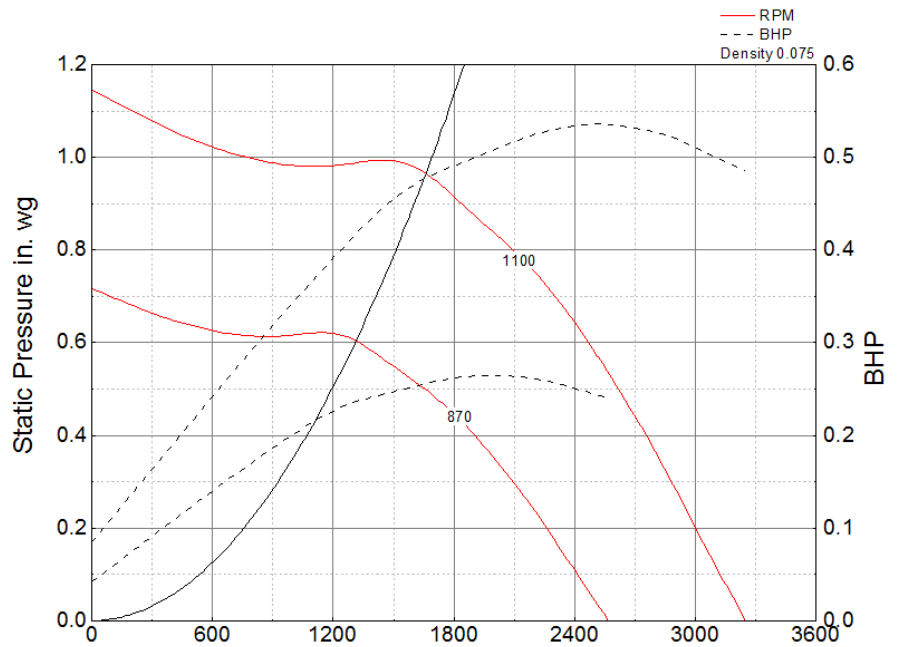
- Aluminum housing - Backward inclined aluminum wheel - Curb cap with prepunched mounting holes - Motor and drives isolated on shock mounts - Birdscreen - Ball bearing motors - Adjustable motor pulley - Adjustable motor plate - Fan shaft mounted in ball bearing pillow blocks - Bearings meet or exceed temperature rating of fan - Static resistant belts - Corrosion resistant fasteners - Sizes 141 and larger have internal Lifting lugs



OVERALL HEIGHT MAY BE GREATER DEPENDING ON MOTOR, ADAPTER, AND/OR HINGE BASE.

Dimensional	
Quantity	1
Weight w/o Acc's (lb)	65
Weight w/ Acc's (lb)	71
Max T Motor Frame Size	145
Roof Opening (in.)	18.5 x 18.5
Damper Size	16 x 16
Roof Curb	GPI - 22

Motor	
Motor Mounted	Yes
Size (hp)	1/2
Voltage/Cycle/Phase	115/60/1
Enclosure	ODP
Motor RPM	1725
Efficiency Rating	Standard
Windings	1
NEC FLA* (Amps)	9.8



Motor HP	Max BHP	Max Fan RPM	Min Fan RPM	Ps (in. wg)	0	0.125	0.375	0.5	0.625	0.75	0.875
1/2	0.53	1100	870	CFM	3,249	3,095	2,787	2,615	2,429	2,198	1,900
				Sones	15.4	14.8	13.9	13.5	13	12.5	11.9