

Model: SP-A250

Ceiling Exhaust Fan

Standard Construction Features:

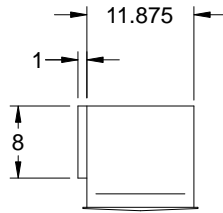
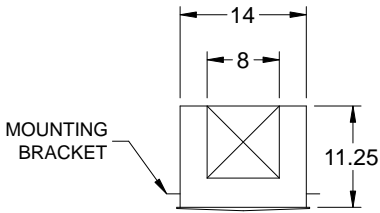
- Corrosion resistant galvanized steel scroll and housing - Sound absorbing insulation - White designer non-yellowing grille - Rectangular outlet duct collar with integral spring loaded backdraft damper - Double inlet forward curved wheel - Plug type disconnect - Adjustable mounting brackets - Field rotatable discharge

Stock Notes

- Units are stocked with 115/60/1 motors
- Plug-in disconnect switch included
- Integral backdraft damper
- All SP fans require 5W Speed Controller

Available Accessories

- Speed controls
- Wall and discharge accessories



Dimensional	
Quantity	1
Weight w/o Acc's (lb)	24
Weight w/ Acc's (lb)	24

Motor	
Motor Mounted	Yes
** Input Watts (W)	83
Voltage/Cycle/Phase	115/60/1
Enclosure	ODP

Model	ENERGY STAR®	HVI	Continuous Ventilation Compatible	Control Voltage	RPM	Amps*	Max. Input Watts*	CFM / Static Pressure in Inches wg												
								0	0.1	0.125	0.25	0.375	0.5	0.625	0.75	0.875	1.0	1.25		
SP-A250	★				1000	0.56	67	CFM	294	274	271	250	230	201	147	92				
								Sones	2.5	2.5	2.5	3.0	3.5	4.0	5.0	5.0				
								CFM/Watt*	4.39	4.18	4.12	3.89	3.67	3.36	2.65	1.80				
								Watts*	67.0	65.6	65.8	64.2	62.6	59.8	55.4	51.2				