

Model: SP-A290

Ceiling Exhaust Fan

Standard Construction Features:

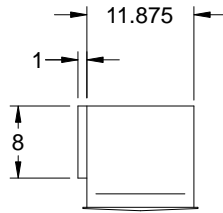
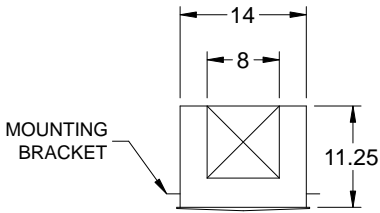
- Corrosion resistant galvanized steel scroll and housing - Sound absorbing insulation - White designer non-yellowing grille - Rectangular outlet duct collar with integral spring loaded backdraft damper - Double inlet forward curved wheel - Plug type disconnect - Adjustable mounting brackets - Field rotatable discharge

Stock Notes

- Units are stocked with 115/60/1 motors
- Plug-in disconnect switch included
- Integral backdraft damper
- All SP fans require 5W Speed Controller

Available Accessories

- Speed controls
- Wall and discharge accessories



Dimensional	
Quantity	1
Weight w/o Acc's (lb)	24
Weight w/ Acc's (lb)	24

Motor	
Motor Mounted	Yes
** Input Watts (W)	81
Voltage/Cycle/Phase	115/60/1
Enclosure	ODP

Model	ENERGY STAR®	HVI	Continuous Ventilation Compatible	Control Voltage	RPM	Amps*	Max. Input Watts*	CFM / Static Pressure in Inches wg												
								0	0.1	0.125	0.25	0.375	0.5	0.625	0.75	0.875	1.0	1.25		
SP-A290					1050	0.72	80.7	CFM	315	293	287	257	231	207	175	124				
								Sones	2.5	2.5	2.5	3.0	3.0	3.5	3.5	4.5				