

## Model: SP-A390

### Ceiling Exhaust Fan

#### Standard Construction Features:

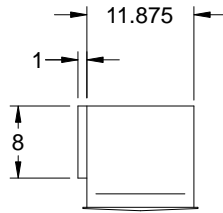
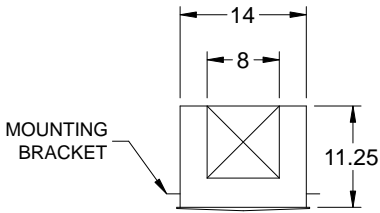
- Corrosion resistant galvanized steel scroll and housing - Sound absorbing insulation - White designer non-yellowing grille - Rectangular outlet duct collar with integral spring loaded backdraft damper - Double inlet forward curved wheel - Plug type disconnect - Adjustable mounting brackets - Field rotatable discharge

#### Stock Notes

- Units are stocked with 115/60/1 motors
- Plug-in disconnect switch included
- Integral backdraft damper
- All SP fans require 5W Speed Controller

#### Available Accessories

- Speed controls
- Wall and discharge accessories



Dimensional	
Quantity	1
Weight w/o Acc's (lb)	24
Weight w/ Acc's (lb)	24

Motor	
Motor Mounted	Yes
** Input Watts (W)	135
Voltage/Cycle/Phase	115/60/1
Enclosure	ODP

Model	ENERGY STAR®	HVI	Continuous Ventilation Compatible	Control Voltage	RPM	Amps*	Max. Input Watts*	CFM / Static Pressure in Inches wg											
								0	0.1	0.125	0.25	0.375	0.5	0.625	0.75	0.875	1.0	1.25	
SP-A390					1350	1.34	135	CFM	410	395	391	368	345	325	307	279			
								Sones	4.5	4.5	4.5	4.5	5.0	5.0	5.5	5.5			