

## Model: SP-B200

### Ceiling Exhaust Fan

#### Standard Construction Features:

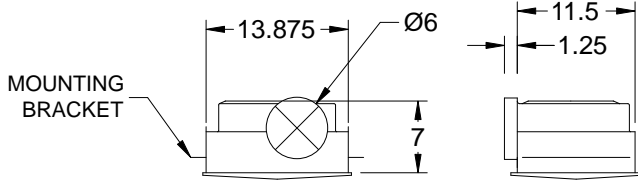
- Corrosion resistant galvanized steel scroll and housing - White designer non-yellowing grille - Round outlet duct collar with integral backdraft damper - Single inlet forward curved wheel - Plug type disconnect - Adjustable mounting brackets

#### Stock Notes

- Units are stocked with 115/60/1 motors
- Plug-in disconnect switch included
- Integral backdraft damper
- All SP fans require 5W Speed Controller

#### Available Accessories

- Speed controls
- Wall and discharge accessories



Dimensional	
Quantity	1
Weight w/o Acc's (lb)	10
Weight w/ Acc's (lb)	10

Motor	
Motor Mounted	Yes
** Input Watts (W)	172
Voltage/Cycle/Phase	115/60/1
Enclosure	ODP

### Model SP-B Performance

Model	ENERGY STAR®	HVI	Continuous Ventilation Compatible	RPM	Amps*	Max. Input Watts*	CFM / Static Pressure in Inches wg										
							0	0.1	0.125	0.25	0.375	0.5	0.625	0.75	0.875	1.0	
SP-B200				980	2.41	185	CFM	208	211	212	216	216	210	197	176	157	130
							Sones	5.0	5.5	5.5	6.0	6.5	6.5	6.5	6.5	6.0	6.0