

Model: SP-B90

Ceiling Exhaust Fan

Standard Construction Features:

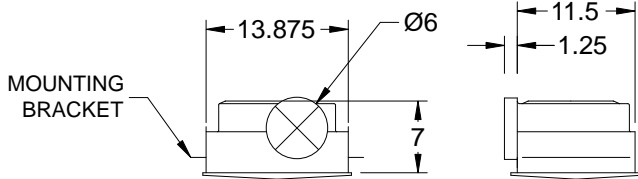
- Corrosion resistant galvanized steel scroll and housing - White designer non-yellowing grille - Round outlet duct collar with integral backdraft damper - Single inlet forward curved wheel - Plug type disconnect - Adjustable mounting brackets

Stock Notes

- Units are stocked with 115/60/1 motors
- Plug-in disconnect switch included
- Integral backdraft damper
- All SP fans require 5W Speed Controller

Available Accessories

- Speed controls
- Wall and discharge accessories



Dimensional	
Quantity	1
Weight w/o Acc's (lb)	10
Weight w/ Acc's (lb)	10

Motor	
Motor Mounted	Yes
** Input Watts (W)	20
Voltage/Cycle/Phase	115/60/1
Enclosure	ODP

Model SP-B Performance

Model	ENERGY STAR®	HVI	Continuous Ventilation Compatible	RPM	Amps*	Max. Input Watts*	CFM / Static Pressure in Inches wg												
							0	0.1	0.125	0.25	0.375	0.5	0.625	0.75	0.875	1.0			
SP-B90	☆	★		700	0.18	21.1	CFM	104	92	89	72	57							
							Sones	1.0	1.0	1.0	1.5	2.0							
							CFM/Watt*	4.93	4.40	4.24	3.48	2.88							
							Watts*	21.10	20.90	21.00	20.70	19.77							